



📍 15 Maud Close, Devizes, Wiltshire, SN10 2SL

🏠 Guide Price £185,000

This delightful one bedroom home has recently undergone an extensive renovation by the current owner, making this an ideal first step on the ladder knowing you can just move straight in. Offered to the market with no onward chain.

- One double bedroom cluster home
- Completely renovated by current owner
- Delightfully presented throughout
- Private south west facing rear garden space
- 2 allocated parking spaces
- Ideal first step on the ladder
- Popular residential location
- No onward chain

🏡 Freehold

🏠 EPC Rating D



Beautifully presented and recently renovated by the current owner, this charming one double bedroom cluster-style home offers a stylish and low-maintenance lifestyle, perfect for first-time buyers or investors alike. The property is move-in ready and available with no onward chain.

To the rear, there is a south westerly facing private garden space, a real highlight of the home, featuring a patio for outdoor dining, a neat lawn, and a well-tended vegetable and planting area, creating a peaceful and inviting outdoor area.

The ground floor accommodation comprises a bright and welcoming open-plan reception/dining room, flowing through to a modern kitchen fitted with contemporary units and work surfaces, along with space for appliances.

Upstairs, a generous double bedroom with built-in storage is served by a modern bathroom fitted with a white suite and shower over the bath.

A superb opportunity to acquire a beautifully finished, low-maintenance home within easy reach of Devizes town centre and its wide range of amenities.

Situation

The property is conveniently located within easy walking distance of the town. The historic market town of Devizes has many amenities including town centre shopping, a leisure centre, schools for all ages, various supermarkets, a variety of shops, cinema, theatre and thriving weekly market. The historic Kennet & Avon Canal runs through the town providing fishing opportunities and waterside walks. The major centres of Bath, Salisbury, Swindon, Marlborough and Chippenham are all within a 30 mile radius.

Property information

Electric storage heaters. We are advised mains electric, water and drainage are connected.

Tenure: Freehold

Council tax band: A

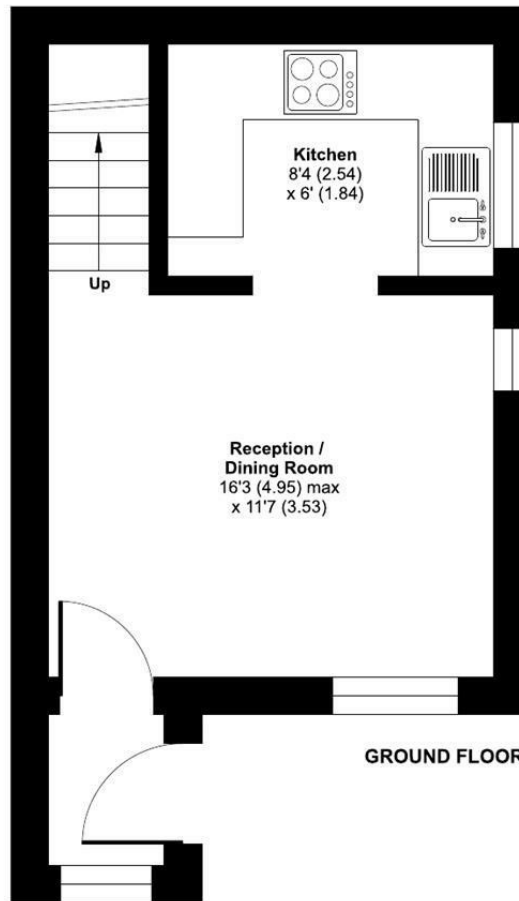
EPC rating: D



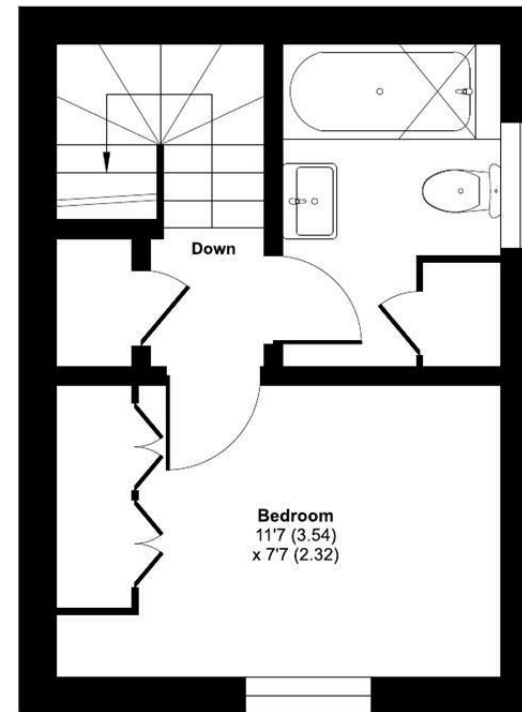
Maud Close, Devizes, SN10

Approximate Area = 399 sq ft / 37 sq m

For identification only - Not to scale



GROUND FLOOR



FIRST FLOOR

 Floor plan produced in accordance with RICS Property Measurement 2nd Edition, Incorporating International Property Measurement Standards (IPMS2 Residential). © nichecom 2025. Produced for Strakers. REF: 1380170

Disclaimer These particulars, whilst believed to be accurate are set out as a general outline only for guidance and do not constitute any part of an offer or contract. Intending purchasers should not rely on them as statements of representation of fact, but must satisfy themselves by inspection or otherwise as to their accuracy. No person in this firm's employment has the authority to make or give any representation or warranty in respect of the property. All measurements and distances are approximate only. Your home is at risk if you do not keep up repayments on a mortgage or other loan secured on it.